

# Ball Transfers

## HIGH CAPACITY

General Bearing Ball Transfers are manufactured to the high standards required by the Engineering and Scientific Industries. They are available in a wide range of sizes, application styles, and load capacities. They will function efficiently whether mounted “Ball Up,” “Ball Down,” or in any angle of inclination as long as the applied load passes through the center line of the unit. For heavy loads where uneven load or track conditions exist, or where shock loading may occur, they can be supplied with spring mounting. This type of mounting is also available where full retraction of the ball is required after final positioning of load. Allow for any known unevenness of load and/or track when considering capacity and number of units to be used. Standard units come with a carbon steel housing and first quality chrome steel balls. Optional units can come with a stainless steel housing, main ball, and/or support balls.

Felt seals are standard except for the 1/2" ball diameter units which have no seal. The standard finish is zinc plating with gold passivation or black oxide. Lubrication is not required. The maximum recommended surface speed is 60 feet per minute and the operating coefficient of friction is 0.5%. The size tolerance is 1/64" unless otherwise specified. The maximum operating temperature at the listed capacities is 250°F. These ball transfers can operate at up to 480°F at reduced capacities as described below:

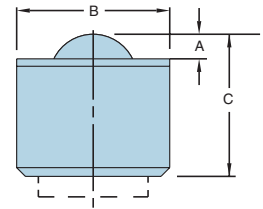
**Temperature (°F):** 260° 300° 350° 390° 440° 480°  
**Load % Decrease:** 5% 10% 15% 25% 35% 40%

**Applications include:** Sheet Steel Handling, Jig and Tool Handling, Air Cargo, Conveyor Transfer Points, Atomic Research, Tube Handling and Inspection, Ball Tables and Moveable Acoustic Walls.



### 41000 Series

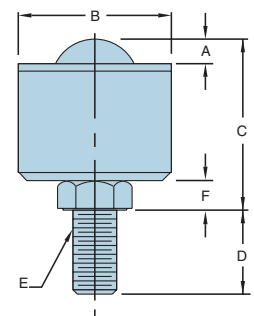
Part Number	Capacity (lbs)	Ball Diameter	A	B	C	Weight (lbs)
41051	75	1/2	5/32	7/8	7/8	0.08
41061	350	1	9/32	1 3/4	1 5/8	0.84
41062	700	1	1/4	2	1 3/4	1.16
41063	2240	1 1/2	1/2	2 3/8	2 3/8	2.38
41064	4480	2	5/8	4	3 7/8	11.93

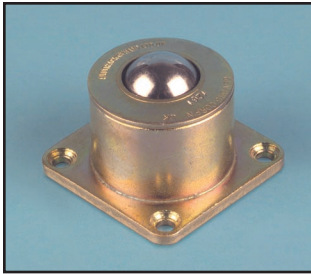


### 41100 Series — Threaded Stud Units

Part Number	Capacity (lbs)	Ball Diameter	A	B	C	D	E	F	Weight (lbs)
41151*	75	1/2	5/32	7/8	0.875	1	1/2 - 24	0.000	0.09
41161	350	1	9/32	1 3/4	1.851	1	1/2 - 20	0.236	0.95
41162	700	1	1/4	2	1.986	1	1/2 - 20	0.236	1.38
41163	2240	1 1/2	1/2	2 3/8	2.769	1 1/2	3/4 - 16	0.394	2.75
41164	4480	2	5/8	4	4.347	2	1 - 12	0.472	11.81

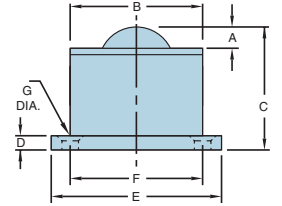
\* No hex head.





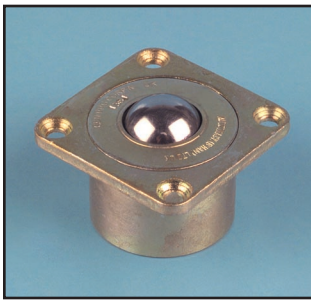
### 41200 Series — Flange Mounted Units

Part Number	Capacity (lbs)	Ball Diameter	A	B	C	D	E	F x F	G	Weight (lbs)
41251*	75	1/2	5/32	.9375	7/8	5/64	1 7/8 x 1 1/4	1 3/8	2 x 5/32	0.17
41261	350	1	9/32	1 3/4	1 5/8	3/16	2 1/4 x 2 1/4	1 3/4	4 x 7/32	0.98
41262	700	1	1/4	2	1 3/4	1/4	3 x 3	2 9/32	4 x 9/32	1.69
41263	2240	1 1/2	1/2	2 3/8	2 3/8	1/2	3 x 3	2 9/32	4 x 9/32	2.75
41264†	4480	2	5/8	4.13†	3 7/8	1/2	5 x 5	4	4 x 7/16	13.38



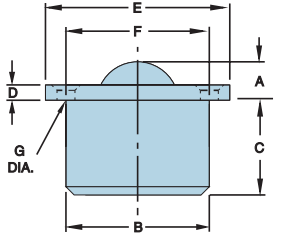
\*41251 - Oval Flange

†41264 - Tapered 4.13-4.37



### 41300 Series — Flange Socket Mounted

Part Number	Capacity (lbs)	Ball Diameter	A	B	C	D	E	F x F	G	Weight (lbs)
41351*	75	1/2	5/16	.9375	5/8	5/64	1 7/8 x 1 1/4	1 3/8	2 x 5/32	0.17
41361	350	1	15/32	1 3/4	1 5/32	3/16	2 1/4 x 2 1/4	1 3/4	4 x 7/32	0.98
41362	700	1	1/2	2	1 1/4	1/4	3 x 3	2 9/32	4 x 9/32	1.69
41363	2240	1 1/2	1	2 3/8	1 3/8	1/2	3 x 3	2 9/32	4 x 9/32	2.75
41364	4480	2	1 7/16	4 1/4	2 7/16	7/8	5 x 5	4	4 x 7/16	12.75

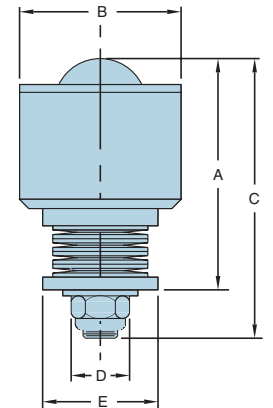


\*41351 - Oval Flange



### 41400 Series — Spring Loaded Ball Transfer Units

Part Number	Load before spring deflect	Load to max. deflection (lbs)	Max. recom. deflection	Ball Diameter	A	B	C	D	E
41451-15	15	70	0.08	1/2	1.534	7/8	1 7/8	.571	.787
41451-30	30	77	0.08		1.518				
41451-50	50	83	0.08		1.534				
41461-15	15	225	0.125	1	2.44	1 3/4	3 1/32	3/4	1 1/4
41461-50	50	240	0.125		2.42				
41461-100	100	265	0.125		2.39				
41461-150	150	275	0.125		2.44				
41462-200	200	460	0.125	1	3.18	2	3 7/8	3/4	1 1/2
41462-300	300	540	0.125		3.19				
41462-400	400	600	0.125		3.17				
41462-500	500	680	0.125		3.19				
41463-1250	1250	1825	0.218	1 1/2	5.38	2 3/8	6 11/32	1 9/8	2 11/32
41463-1650	1650	2203	0.218		6.16				
41464-1680	1680	3080	0.08	2	5.47	4	6 5/16	2	4



All dimensions in inches.